



USER MANUAL



Front Load-Fully Automatic Washing Machine

Model No.:
JSX60FFL/ JSX70FFL

Thank you for buying our product!

Please read this manual before installing and using this machine. Before the first use, make sure the handling screws on the back of the machine are removed. Place the washing machine directly on the hard floor and level it. Do not place it on a movable stand.

For the sake of safety, please do use a securely grounded 3-pin socket. Observe all instructions, warnings, notes and procedures contained in this manual.

There may be technical changes to the content of this manual without further notice. If any failure is discerned, stop using the washing machine and contact a designated service centre. Never repair the washing machine on your own.

Operating Instructions

Safety Precautions (Please observe them fully) 3

Name of Parts6

Placement Location7

 Carrying the Machine7

 Installation of Bottom Plate7

 Set-in Installation7

 Placement Location and Product Dimension7

Installation8

 How to Remove Anchor Bolts Used for Transport8

 Horizontal Adjustment8

Water Inlet, Drain Hose and Power Cord 9

 Tightening Drain Hose 9

 Connecting the Water Inlet Hose 9

 Drain Hose10

 Connecting Power.....10

Check After Installation11

 Installation Checklist11

 Trial Operation After Installation 11

Preparations Before Washing12

Descriptions of Operating Buttons15

Detergent - Softener (How to Add)17

Operation Methods

Program List18

Operation Method 20

Optional Functions 21

 Timed Operation21

 Child Lock 21

Maintenance and Care

Machine Body 22

Detergent Container 22

Door Glass and Door Gasket 23

Pump Filter 23

Filter Mesh of Water Inlet Valve 24

Preventing Frozen Water Inlet, Drain Hose and Internal Connection Hose24

If Required

Fault Checklist 25

Abnormal Display 27

Specifications Back Cover

Be sure to follow the safety precautions described below to prevent injury or property losses to the user or others.

- Ignoring or incorrectly understanding these symbols may result in the following consequences.



Warning

This describes issues which may cause serious injury.



Caution

This describes issues which may cause personal injury or property damages.

Items to be observed are distinguished using the following symbols and described as follows.



Indicates prohibited items.



Indicates items that must be obeyed.

Immediately stop using the machine and pull out the power plug in case of the following situations. Contact designated service centre to check and repair the machine!

- The washing machine does not start when it is powered.
- Abnormal sound is heard when the washing machine is operating.

May result in smoke, fire or electric shock.



Keep sources of ignition, such as candles or cigarettes, away from the machine.



No smoking

They may cause fire or deformation.



Warning

During Operation

Be sure to pull the power plug out of the socket and turn off the water tap after operation!



The washing machine may be damaged by electric fluctuation.

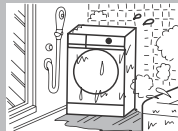
Water leaks or flooding may occur due to overpressure of water.



Do not place the washing machine on a damp place such as in a bathroom or exposed to the outside weather!



Do not use the washing machine at places exposed to water. This may cause electric shock, fire, failure and deformation.



Do NOT connect to the hot water supply!



Prohibited

This may result in deformation or damage to the plastic parts of the water inlet hose, causing water leaks, electricity leaks or electric shock.

Keep flammable chemicals away from the washing machine, for example, kerosene, gasoline, light gasoline, thinner, alcohol, or clothing soaked with these chemicals!



Prohibited



They may cause an explosion or a fire.

When you are cleaning your washing machine, do not apply water directly to any part of the washing machine.



No water sprinkling

It may cause short circuit and electric shock.



Power-Plug/Socket

The power socket must be used independently, unidirectional, with two poles and a ground wire, rated at 10A, 220-240V~



If the power socket is used together with other appliances, fire may occur due to heating.

Ensure the power plug is fully inserted into the household mains socket!



Otherwise, a loose connection may overheat and cause an electric shock or fire.

- Never use a damaged power cord or loose power socket.

Remove any dust which may accumulate around the power plug.



When dust has accumulated on and around the power plug, and the dust gets damp or wet, the insulation plug become defective and may causes fire.

- Pull out the power plug, and wipe off dampness with a dry cloth.

Avoid any actions that may damage the power cord and power plug. (Do not cause damages to them; Do not fabricate them; Keep away from a heating appliance; Do not excessively bend, torsion, extend or bind them or place heavy objects on them).



Using the damaged power cord and power plug may cause electric shock, short circuit and fire.

Prohibited

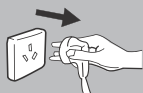


Please consult the service center for repairs of the power cords and power plug.

Always pull the power plug out of the power supply before cleanup or maintenance!



Plug MUST be pulled out



Otherwise, electric shock or injury may occur.

Do NOT touch the power plug with wet hands!



No touching with wet hands



Doing so may cause an electric shock.

To prevent injury

Do NOT dismantle, repair or modify the washing machine!



No dismantling

Otherwise, it may result in fire or injury.

- If repairs are needed, contact your designated service centre.



Children should be supervised to ensure that they do NOT enter the drum. Do NOT place a chair or a similar object close to the washing machine!



Prohibited

There is a risk of injury if a child has entered the drum.



Do NOT touch the laundry inside the drum until it has completely stopped!



Never touch

You may be injured if your hands are wrapped by the clothes even if the drum spins slowly. Be sure to protect the children against such risks.



Avoid collision of the door glass by a hard object to prevent the glass from breaking, which may cause injury!



Prohibited

Do NOT slide your hand (or unprotected foot) underneath the washing machine when in use!



It may cause injury.

Prohibited

This appliance is not intended for use by persons (including children) with reduced physical, sensory or mental capabilities, or lack of experience and knowledge, unless they have been given supervision or instruction concerning use of the appliance by a person responsible for their safety.



Prohibited

May cause fire or serious injury.

Power - Power Cord

Do not drag the power cords when pulling out the power plug. Please hold the plug with hands when pulling it out!



Electric shock or short circuit may occur, which may cause fire.

Never use the socket if the socket hole is loose, and never use damaged power cord and power plug!

Otherwise, it may cause electric shock, short circuit and fire.

- Please contact your designated service center for repair if needed.



Prohibited



Y connection is applied for the power cord. If the power cord is damaged, it must be replaced by designated service centre in order to avoid a hazard.



Otherwise, there may be negative consequences.

A single-phase power plug, with a ground wire at both poles, shall be used. Reliable grounding shall be ensured! If a grounding unit is not installed, static electricity may be generated at the case body or other metal parts!



Electric shock may occur in case of a fault or electric leaks.

Must be grounded



Caution

During Operation

BE CAREFUL not to get laundry caught in the door seal when the door is close



This may result in a water leak or damage to the laundry during the wash cycle.



Prohibited

The water pressure for the washing machine is 0.03-1MPa!



0.03-1 MPa



Water leaks may occur at both ends of the water inlet hose in case of overpressure.

Ensure that the water tap and water inlet pipe joint are reliably installed. Make sure that the inlet hose has been fully inserted into the inlet hose joint or into the special water tap purchased separately. Do not insert or pull out the inlet hose frequently to prevent looseness of the inlet hose or wear of the waterproof washer for the inlet hose joint.



May cause water leaks or fire due to changes in water pressure.

Prohibited

To Prevent Injury

Do not wash, rinse or spin the waterproof sheets and garments!



(For example) sleeping bags, diapers, sauna bathrobe, rubber driver's suits, skiing clothes and covers for bikes, motorcycles and automobiles.

Prohibited

Otherwise, personal injury or damage to the machine, wall, ground or clothing, or water leaks may occur due to vibrations or rotation during the spin cycle.

Do not climb up or put heavy objects on the top of the machine!



You may be injured due to set deformation or breakage of the washing machine. The objects placed on the top may drop and break due to vibrations during operation

Prohibited



Please remove the cover when discarding the washing machine!



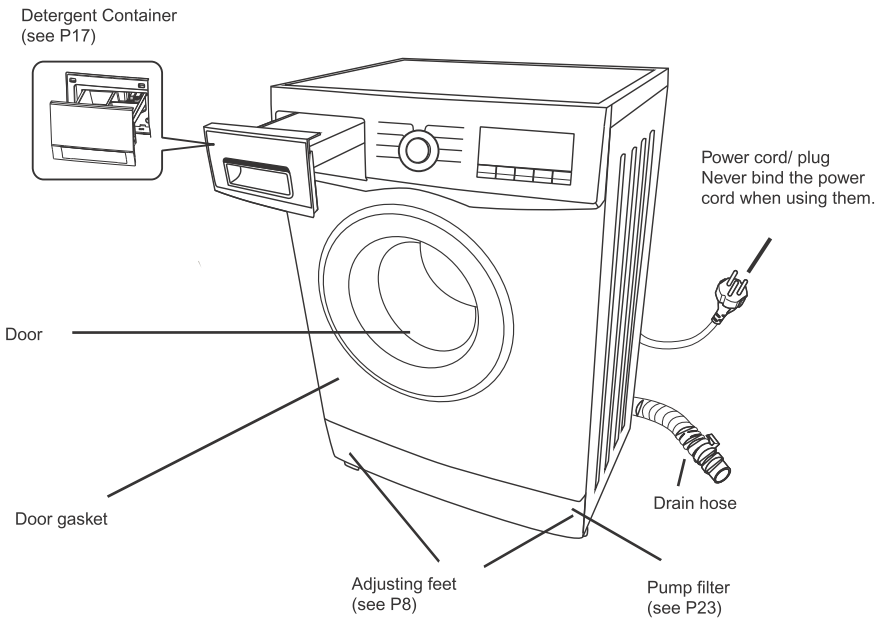
Otherwise, a child may be locked in the drum in extreme situations.



Prohibited

Do not obstruct the openings of the bottom face with carpet, etc.

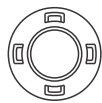




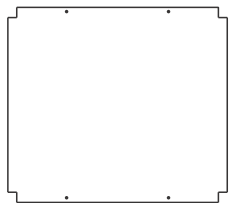
Accessories

Please ensure that all accessories are supplied with the machine.

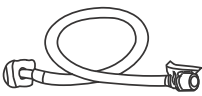
Cover cap (4) (see P8)



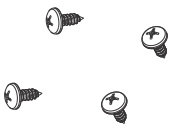
Bottom plate (1) (see P7)



Inlet hose (1) (see P9)



Bottom cover screws (4)



New hose-sets supplied with the appliance are to be used and that old hose-sets should not be reused.

Carrying the Machine

The washing machine must be carried by 2 people.



Tilt the washing machine backwards and raise it, with one person behind it holding the top edge and another in front of it holding the bottom legs.

Installation of Bottom Plate

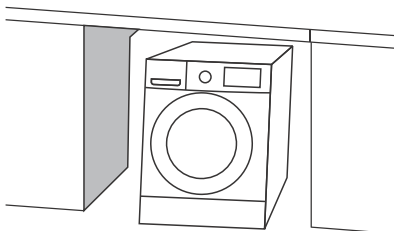
Place the washing machine in such a way that it is inclined backward. Insert the end without holes into the box at the rear of the washing machine. Press the bottom plate to make it bend slightly, and insert the front end into the box of the washing machine. Fasten two screws at the left and right respectively (Notes: the screws have been supplied in the accessories).

Notes:

- Install the bottom plate before removing the anchor bolts. Make sure the inclined position of the washing machine is reliable and a person standing nearby helps to support the machine with hands.
- When installing the bottom plate, make sure that the plate does not bend seriously to prevent breakage of the bottom plate.

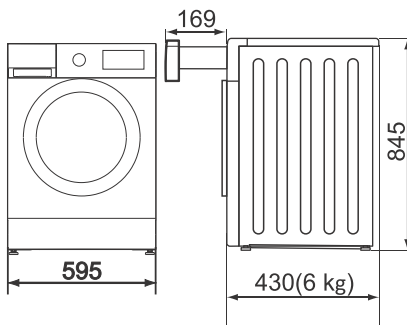
Set-in installation

- You need a space of at least 64 cm wide. Provide at least 2 cm of clearance on both sides and at least 5 cm of clearance on the top and 3 cm on the back of the machine.
- Be sure to insert the power plug into the independent dedicated household socket. Make sure the socket is placed at such a place that enables you to easily pull out the plug.



Placement Location and Product Dimension

Make sure there is enough space for the washing machine.



Size (unit: mm)

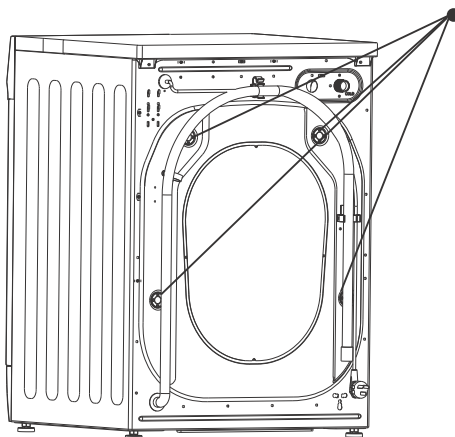
Caution

- Install the appliance on a flat, stable surface to avoid excessive vibration and noise.
- Do NOT install the appliance in direct sunlight or in a place where temperature reach freezing.
- Do NOT let metallic portions of the appliance come into contact with metal plate of furniture, sinks or other appliances.
- Be sure to remove all packages (including the foam cushion and anchor bolts assembly) before using the machine. Otherwise, damages may occur.



Removal of Anchor Bolts (handling screws)

Inner parts of the washing machine are secured with four handling screws (one special screw and three ordinary screws). Be sure the screws are in place when handling. Remove the screws with a wrench (not supplied as attachment) before installation.

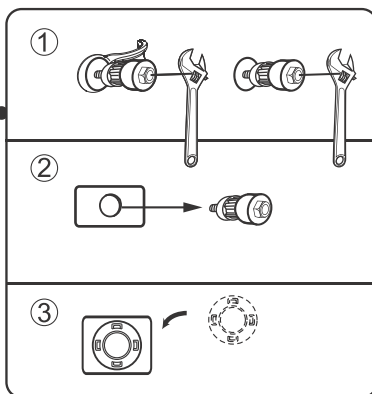


The anchor bolts used for anchor are needed when you need to move the washing machine. Keep it safe to use it in future.

You need to install in the reversed procedure if you need to handle the washing machine once again.

Caution

Excessive vibrations may occur if the machine spins with the anchor bolts attached.



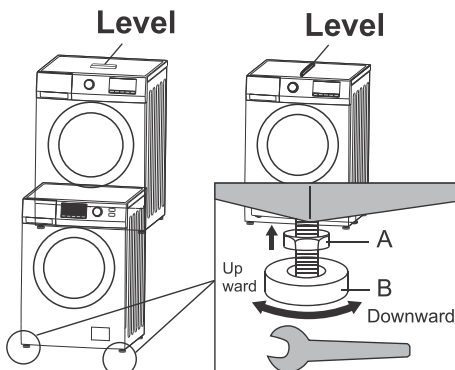
1. Loosen the anchor bolts (4 bolts) using a spanner etc.
2. Rotate the rubber part of the bolt anticlockwise so that it is pulled out.
3. Take out the 4 cover caps in the accessories. Press the cover cap against the holes until a desired fitting is realized.

Caution

- Foreign matters or a child's fingers may enter the machine, if the cover cap is not properly installed.
- Please contact the designated service center if you find it hard to pull out the rubber due to deformation.

Horizontal Adjustment

- Make sure the washing machine is level and stable when the four feet are placed on the ground.
 - You can adjust the levelness using a level or by adjusting the height of the feet (place the level at the left, right, front and rear respectively as required).
 - Tighten nut A using a thin-type spanner.
 - Adjust the height at the feet (4) by rotating as shown below.
 - Tighten nut A upward to prevent looseness of the feet.
- ※ The level and spanner are not included in the scope of accessories.

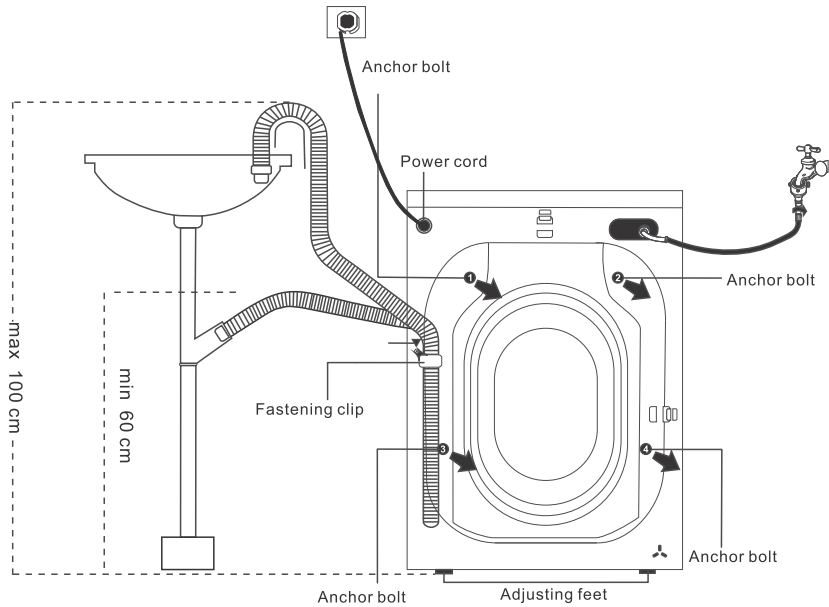


Tightening Drain Hose

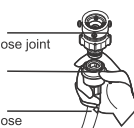

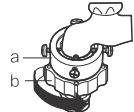
- 1. Secure the drain pipe 0.6-1 meter from the ground to prevent siphoning
- 2. Fix the drain hose using a lifting rope to ensure that the bend has no impact on the water flow. This prevents displacement of the drain hose.
- 3. Do not insert the drain hose into the washing machine if it is too long to prevent abnormal operation.

Caution

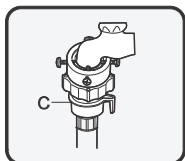
- Do not remove the fastening clip of the drain hose.
- Improper horizontal adjustment may result in high noise from the washing machine, excessive vibrations and obvious displacement of the machine.



Connecting the water inlet hose

<p>Remove the joint from the water inlet hose supplied together with</p> 	<p>Loosen the four screws at the joint using a cross-head screw-driver. Rotate part b in the direction shown below until a 5mm-gap is obtained.</p> 	<p>Connect the water inlet joint and the water tap. Rotate part b as shown below until reliable tightening is obtained.</p> 
--	---	---

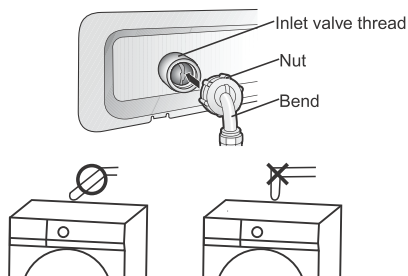
- How to connect inlet hose and joint Connect the inlet hose to the joint. If you hear a click sound when pulling down the part of the water inlet hose, it indicates that the hose has been automatically connected. (Pull down the water inlet hose to make sure the hose will not be pulled out).



How to connect the inlet hose and inlet valve

Fit the nut part of the inlet hose onto the thread part of the inlet valve.

- ⌘ Never fold the water hose to prevent leaks.



Slightly raise the bend to tighten the nut.

- ⌘ Confirm that the nut has been reliably tightened, and that the bend is not loose.

How to remove water inlet hose

Loosen the four screws at the joint using a cross-head screw driver in anticlockwise direction.

Caution

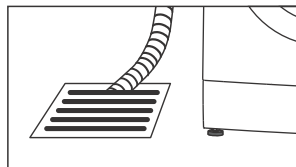
- Be sure to tighten nuts to prevent water leaks.
- Be sure to use the new fittings supplied as accessories.
- You can buy a water inlet hose that is long enough at a local service center recognized by Sansui if the supplied hose is not long enough.

Drain Hose

Caution

Never distort, draw or bend the drain hose.

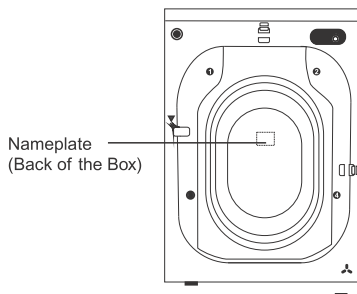
Be sure to insert the drain hose into the drain hose duct. The height of the drain hose shall not exceed 1m.



Caution

- Never obstruct the drain hole of the wash basin and ensure that the drained water flows smoothly.
- Never immerse the end of the drain hose in water that has been drained off. Otherwise, water may flow back to the washing machine again.

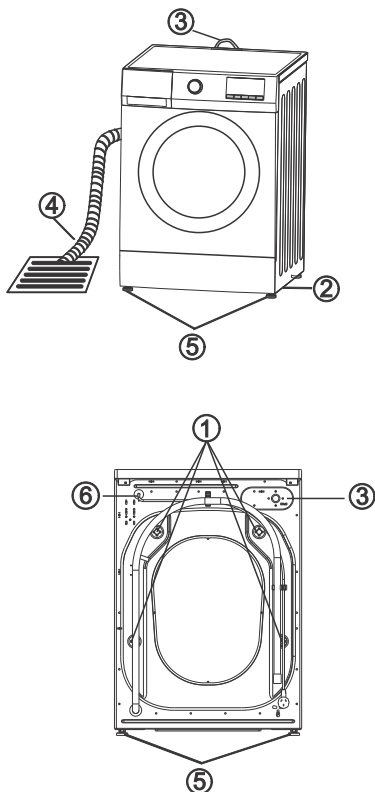
Connecting Power



Caution

- The standard for the rated power of the washing machine are indicated on the nameplate. Please confirm if the power used at your home conforms to the standard.
- Never insert the power plug of the washing machine into an extension line or a multi-hole socket.
- In case of defective power cord or power plug, do not use them/it, and contact a service center recognized by Sansui for replacement.

Installation Checklist



1. Anchor bolts
Have you removed them and attached the cover caps properly?
2. Location
Is the appliance on a flat, stable surface? Does it run without vibrating?
3. Inlet hose
Is it free from leaks? Is the water supply normal?
4. Drain hose
Is it free from leaks? Does it drain normally?
5. Adjustable stands Are they bolted securely to the appliance?
6. Power supply
Is a dedicated socket of rated current and voltage used?

Trial operation after installation

Check if water leaks and abnormal noises occur, and if drainage functions properly after the installation.

Carry out the following operations when no laundries are available in the drum.

1. Turn on the water tap.
2. Close the door.
3. Turn the knob to power on the machine.
Select [QUICK WASH] button and press [Start/Pause] button.

Confirm the following:

- Is there any abnormal noise?
If yes, confirm that the washing machine is stable.
- Is there any water leakage?
If yes, make sure that the water hose has been properly connected.

The following errors may occur:

E 04

- Is the drain hose properly connected?
- Is the drain hose blocked?

E 01

- Is the water inlet hose properly connected?
- Is the water tap been turned on?

After the fault is checked and cleared, operation continues if you press [Start/Pause] You may also restart the program.

If the fault persists, pull out the power plug and contact the service center as recognized by Sansui.

Initial Use

Before initial washing, make sure the "tub clean" function is executed when no laundries are present in the washing machine. Turn on the water tap, power on, and press "tub clean". (Notes: better cleanup effects can be obtained if a proper amount of bleach is used).

Classification of Laundry

- Read clothing care labels to sort the laundry into different loads.
- Sort the laundry by colour, type of fabric and how soiled it is. Doing so will help you choose the correct programme and temperature for each wash.

Laundry Preparation

■ Pre-washing treatment of local stain positions

- Collar and gusset

Apply special stain remover at the dirty positions on the collar and gusset.



- Stain

Apply detergent or oxygen-rich series bleach at positions with stains.



- Sludge, solid stains

(Curry, chilli sauce) Apply special detergent or soap at positions with stains, and scrub using hands.

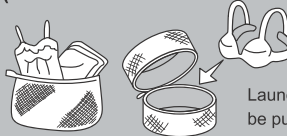


■ Laundry to be placed in a laundry net (to be washed with other clothes)

- Bras with metal wires, and tights.

Put them into a laundry net to prevent them or the appliance from being damaged.

- Lace clothing and small items.



Laundry net (Note: the net must be purchased separately)

■ Checking laundry

- Check clothes and remove sharp objects, for example, the hairpins and screws, which may damage the clothes.



- Tie up any loose strings on the apron and pillowcases etc. If zippers or sharp ornaments are provided on the clothing, close the zippers. Turn clothing with raised fabrics and zippers inside out. Otherwise, the clothes may be damaged.



- Clothes that are not colour fast should be washed separately (to prevent dyeing).



- Red or dark blue clothes.
- Jeans etc.

- REMOVE any hair, animal fur, sand and other materials with a brush before washing.



- For clothes prone to fluff, be sure to turn them toward the outside from the inside.



- Prevent static electricity



Static electricity may be generated, depending on the type of clothes. Please use softener during washing.

■ Approximate weight of clothing

The following weights are for reference only.



Shirt
(blending, about 200g)



Female shirt
(blending, about 200g)



Socks
(blending, about 50g)



Briefs
(100% cotton, about 50g)



Bedsheet
(100% cotton, about 500g)



Pajamas (pcs)
(100% cotton, about 500g)



Long-sleeve undershirt
(100% cotton, about 150g)



Bath towel
(100% cotton, about 300g)



Kilt
(chemical fiber, about 400g)

Delicates/Synthetic/Intensive Programs

The drum spins gently in the [Delicates/Synthetic/Intensive] program.

Laundry load:

- For [Delicates] program: 2.0 kg or less.
- For [Intensive] program: 2.0 kg or less.
- For [Synthetic] program: 2.0 kg or less.

Approximate weights:

- Wool sweater: 400g
(Qty: 1)



- Chemical fiber jacket: 600g
(Qty: 1)

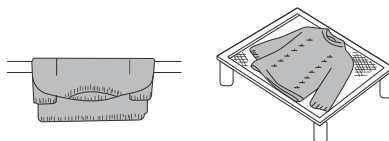


- Pants: 400g
(Qty: 1)

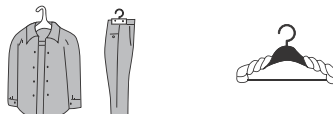


Hanging the laundry

- Hang out white or light-coloured wool and nylon items away from direct heat or sunlight.
- After washing, lay out wool and nylon clothes, and return them to their normal shape before hanging in the shade. This will help to reduce the ironing time.
- Hang wool items with creases smoothed out, or spread them out to dry.



- Use hangers for shirts, blouses and trousers. Wrap a towel around the hanger to approximate the clothing's shoulder width so that it will retain its shape as it dries.



Tips for washing delicates

Fold the laundry so that its shape enables it to be easily put into the drum. Put it into the drum while making sure it is flat. Change the direction of each laundry if there are many laundries to ensure even overall thickness.

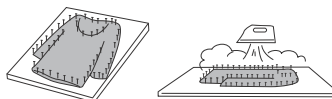
※ Vibrations occur if the number of laundry exceeds a proper value. In this case, observe the specifications on the rated capacity.

Detergent


- Use a mild liquid detergent for delicate items. Other detergents may damage the laundry. "Rinse" function may be required in the [Delicates/Synthetic/Intensive] program to remove residual detergent from the laundry.


If clothing shrinks in the wash

Spread the item out to its original size on an ironing board. Use dress pins to hold the size and shape. Then, use an iron to steam it and leave it to dry.



Bedding programme

Make sure that the label of each item to be washed shows either the wash ()

or hand - wash symbol ()

- Wash only one blanket at a time.

Washables:

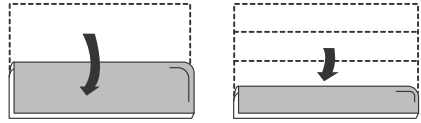
- 100 % synthetic fibre blankets -up to 3 kg.
- 100 % synthetic fibre futons and 100 % cotton blankets
- Up to 1.5 kg (single bed size) sheets
- Bedspreads.
- 100% synthetic fibre undersheets.

Non-washables

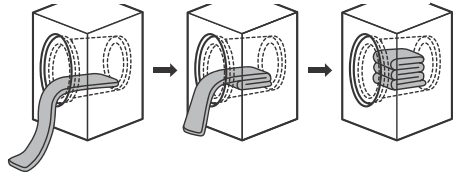
- 100 % wool blankets
- Long- piled blankets
- Electric blankets (including cover)

Putting bedding into the drum

1. Fold down blanket or bedspread into a quarter of their original size.



2. Put the blanket or bedspread into the drum. Fold it while putting it into the drum (fold into 1/6 of the original size).



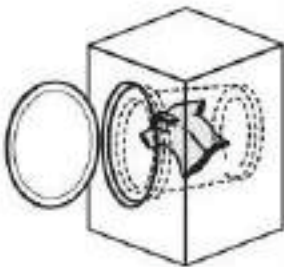
Both ends of blanket should face the rear of the drum.

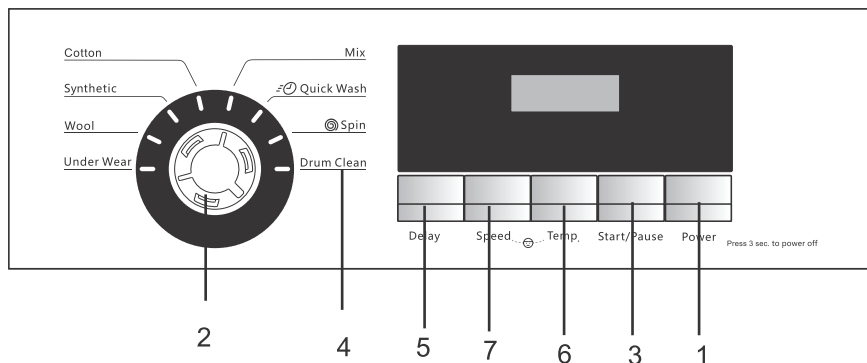
Caution

- Before closing the door, make sure that all laundries have been put into the inner drum as shown in the figure to prevent the laundries from being caught by the drum, which may damage the laundries or the gaskets.

Caution

- Do NOT roll the blanket or bedspread into balls, or haphazardly fold them.
- This may cause excessive vibration and damage the laundry or the appliance.
- Do not use the blanket nets. Otherwise, spinning will fail.





1. Power Button

Press this button to power on the washing machine. At this time, the indicator lamp goes on. The washing machine will shut down if you press this button when the machine is operating.

2. Program Selection Knob

When the knob is turned to point to STOP, the power is turned off; when the knob is turned to point to other functions, the power is turned on. Please select the proper washing features for different clothing items, so as to attain the best effect.

3. Start /Pause Button

Start: press this button to start up the washing machine after the required program and functions have been selected. Pause: press this button to temporarily disable the program during operation of the machine. Re-press this button to continue executing the program.

4. Drum Clean Button

Turn the knob to [Drum Clean] and press [Start /Pause]. Under this mode only the POWER feature is available, including CHILD-LOCK and PAUSE features.

5. Delay Button

This button allows you to preserve the end time of the washing. Continuously pressing it allows you to switch between 0.5-24 hrs. The preserved time indicates that washing will be finished after [xx]

6. Water Temp Button

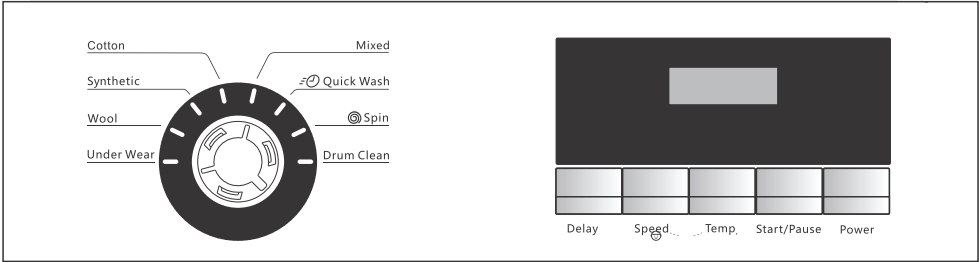
The default washing temperature varies for different washing programs. This button allows you to select the water temperature suitable for the washing.

7. Spin Speed Button

The default spinning speed varies for different washing programs. This button allows you to select the spinning speed suitable for the washing.

8. Spin Speed + Water Temp

To set [Child Lock] function, press and hold the two functional buttons for about 3s after the operation started. [Child Lock] function is intended to prevent a child from touching the control panel during washing, which may cause changes in the program or improper washing (see P21 for details).



Cotton:

You can use this program to wash some washable and fastness clothes. This program will take a relatively longer period, and the washing power is relatively strong. Daily cotton laundry is suggested, such as sheet, quilt cover, pillowcase, bathrobe, cotton underwear, etc.

Mixed

You can use this program to wash some washable and fastness clothes. This program will take a relatively shorter period, and the washing power is relatively strong. Daily cotton laundry is suggested.

Synthetics

This program is suitable for the synthetics clothes. The washing power is softened.

Wool

This program is suitable for the machine washable wool clothes. The user can choose different temperature and detergent according to the label of the clothes.

Quick Wash

This program is suitable for the less dirty clothes, and it saves time, water and electricity.

Underwear

This program is suitable for under wears & light clothes [P18].

Spin

This program is designed for spin-only.

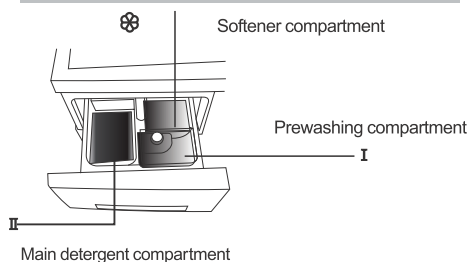
Drum Clean

This program is designed for the cleanness of the inside and outside of the tub. The temperature of it is 90°C, which may sterilizing the machine and help the washing to be more clean. When using this program, do not put in any laundry. The result will be better if add an appropriate amount of chloride-contained bleaching agent. The user can use this program regularly according to the need.

Pull out the detergent drawer and add detergent or softener to the correct compartment. Check the packages for the recommended amounts (the amount depend on the number of laundries and the extent of stains).

Caution

Do NOT use the appliance when the detergent container is removed. This may result in a water leak.



Main detergent compartment

The following detergents and additives may be added to this compartment:

- Detergent
- Tub cleaning detergent

The detergent will enter the drum ONLY when water flows through the detergent box. Therefore, if you have forgotten to add detergent, please power off the machine and restart, and then select "single drain" function to drain off water from the washing machine. After that, add detergent and restart the program.

※ "single drain" select program selection knob [Spin] and press spin speed button "No Spin".

Detergent

1. Liquid detergent

Caution

Do not use liquid detergent as the main detergent for programs with pre-washing.

It is recommended that a mild liquid detergent be used for cotton program.

2. Powdered detergent

It is advisable to use low-foam soap powder. The following ways help prevent powdered detergent from being left in the detergent box:

- Wipe inside the detergent compartment to make it dry.
- Make sure no blocks of powder are added to the compartment. Detergent blocks may cause obstruction after a prolonged period.

Amount of detergent

Please follow recommended amount of detergent described in package. The amount of detergent you should use depends on the following factors:

- How soiled the laundry is
 - Amount of the laundry
 - Water hardness
- The amount of foam varies according to the amount and type of detergent, how soiled the laundry is, and the hardness and temperature of the water.

Softener compartment

The following additives may be added to this compartment:

- Fabric softener

Fabric Softener

To prevent static, add softener before you start washing. It will be automatically added in the final rinse cycle.

Dilute concentrated softeners before you add them. Add up to only 70 mL to the compartment to avoid overflowing.

Undiluted softener



Please note the position of the blue cover to avoid negatively affecting the auto filling of the softener.

The filled softener should not exceed the maximum marked amount.

※ Certain brands of softeners may stick to the compartment (becoming residues) when water is used to flush them. In this case, flush using clean water.

If flushing cannot be done, you can take down the detergent box from the machine and perform flushing (see P22 for details).

Pre-washing compartment

Pre-washing detergent

Whenever you use the Pre-wash of Cotton, Intensive, Synthetic, Down Jacket, Bedding and Mixed programme, always put detergent in this compartment.

Caution

The amount of foam depends on the amount and types of detergent used, how soiled the laundry is, and the temperature.

- Overflow of foam and water may occur if the door is opened during operation. In this case, clean the foam and water using a towel. Do NOT use excessive powdered detergent to prevent excessive foams. Otherwise, a de-foaming program is included automatically, which prolongs the washing time.

※ "single drain" select program selection knob [Spin] and press spin speed button "No Spin".

Program	Capacity (kg)	Applicable clothing types and conditions	Default parameters	
	6.0/7.0		Temperature	Dewatering (RPM)
Cotton	6.0/7.0	Average laundry	40°C	800
Drum Clean	—	No laundry	90°C	600
Spin	6.0/7.0	Laundry needs dewatering	—	800
Mixed	6.0/7.0	Average laundry	40°C	800
Quick Wash	3.0/3.5	Not too dirty laundry	—	800
Underwear	3.0/3.5	Underwear and light clothes	40°C	800
Wool	3.0/3.5	Woolen clothes	40°C	600
Synthetics	3.0/3.5	Silk clothes	40°C	600

- Means that detergent and softner are added when necessary
- Means that detergent and softner must be added
- ✕ Means that detergent and softner are not allowed

Note: The time in the form is the standard time set by the program, influencing by the hydraulic pressure, water temperature, environment temperature, etc. and the actual operation time may be changed slightly.

* The energy efficiency grade is measured when washing cotton and linen laundry at 60°C and 1200rpm.

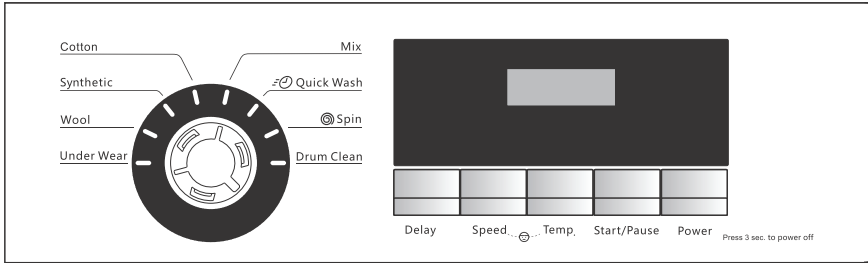
Time needed

- Time depends on the program selected and the temperature setting.
- Actual time may be different from the time shown in the form.
- Display time includes time to supply water and to drain water, and will be changed due to the hydraulic pressure, discharging conditions and number of clothing.
- If you change the setting during washing, the display time will be extended
- Time may be extended to correct the deviation of the clothing.

Maximum parameters				Additional feature		
Time	Temperature	Dewatering (RPM)	Time	Prewashing agent	Detergent	Softener
2:50-3:00	90℃	1200	1:49	○	●	○
1:00	90℃	600	1:00	✕	✕	✕
0:09	—	1200	0:09	✕	✕	✕
1:08	90℃	1200	1:29	○	●	○
0:15	40℃	800	0:35	✕	●	○
1:34	90℃	1200	1:54	○	●	○
0:45	40℃	600	0:45	✕	●	○
1:10	60℃	800	1:20	✕	●	○

Change setting during washing

- Other functions are unable to be changed once the washing starts. If there is any need for change, please turn off the switch before starting the machine.
- During the washing process, if the spinning speed needs to be altered, then it can be altered by pressing [Start/Pause] button.
- If the washing process is finished, then there is no need for alteration.
The program cannot be altered if the machine starts, no matter how you turn the rotary knob.



1. Open the door and put the laundries into the drum.
For details on preparation and laundries, see P12, 18-19.
2. Close the door, and turn on the water tap.

※ The above figure is based on cotton program.

6. Press [Start /Pause] button.



2:50 indicates the remaining time before water entry.



The buzzer sounds, and the operation is finished.

Caution

- Make sure that no laundries are caught by the door.
- Do not put too many laundries in the drum.
- This may cause excessive vibrations or damage to the washing machine.

3. Plug in the socket and turn the switch knob to turn on the washing machine.
4. Select the program knob to set the desired washing program.
- The time required for washing is displayed on the panel. For details on optional functions and settings for each program, see P18-19.

Caution

- Take out the laundry after the washing session. Do not leave the laundry in the cylinder for long, as this may result in color running, deformation and wrinkles.
- If the knob is turned while the washing machine is working, the buzzer will alarm but the features selected and the remaining time will not change.

Timed operation

- Select the duration from the current time to the end time.
- Time saver is not available for the following functions: [Drum Clean] [Spin]
- The actual operation duration may differ from the preserved duration, depending on the type of laundry, temperature conditions and water inlet/drain conditions.

Caution

- Do Not use detergent that is hard to dissolve during saver function, as blocks may be formed before washing in this case. As a result, the detergent may fail to flow out.

To set timed operation, do the following:

1. Press 3 sec. to power off
2. Select the required program and optional functions.
3. Set the preset time.
Continuously press [Delay] button until the required time is displayed.
4. Press [Start /Pause] button to complete saver setting.

Be sure to re-set in steps as described above after power-off.

Cancelling preset time

In standby mode, after changing the washing program or pressing the temperature key to change the total washing time, the appointment will be cancelled

Viewing preset time setting

The remaining time displays when preset time set.

Child lock

- The door and buttons must be locked to prevent a child from entering the drum.
- Setting and release of child lock:
- Setting: After starting the course, hold down [Water Temp] + [Spin Speed] at the time for 3 seconds to set this function. The indicator lamp is on after setting, until the operation is finished.
- Release: After starting the course, hold down [Water Temp] + [Spin Speed] at the time for 3 seconds to set this function. The function will be canceled.

The following example describes how to use the child lock:

- Put the laundries into the drum, select the program and run the machine. Set "child lock". "Child Lock" indicator lamp lights up and the child lock is in a "locked" status during operation of the machine.



The lock is released after the operation.

Machine Body

The machine body should be cleaned using a soft cloth and moderate detergent, for example, kitchen detergent and soap water.

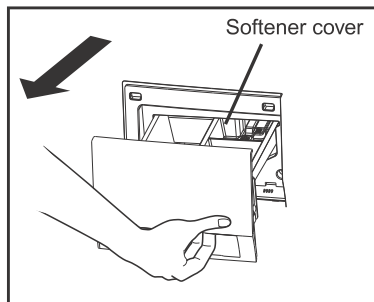
Warning

- Never spray water into the machine body.
- Never use abstergent, thinner or products containing alcohol or kerosene.

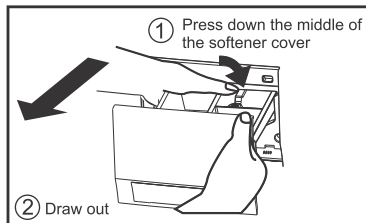
Detergent Container

Make sure that the detergent container is periodically cleaned to prevent residual detergent and generation of bacteria.

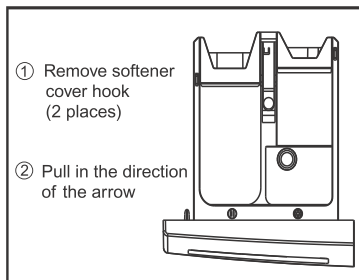
1. Pull out the detergent container



2. Remove the detergent container by pulling it out while pressing down on the middle of the softener cover



3. Remove the softener cover.



4. Wash out the detergent residue with water. Use a cloth to wipe the water from the washing machine.
5. Attach the softener cover to the original position of the softener box.

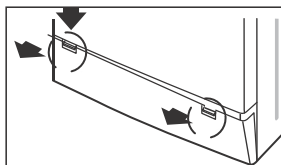
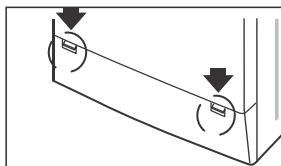
Door Glasses and Door Gaskets

Do the following whenever the work of the machine is finished:

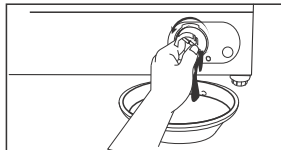
- Remove any objects on the door gasket.
- Wipe the door glass and door gasket with a dry soft cloth to remove any wire debris and dirt
- Open the door for ventilation and drying if required.

Pump Filter

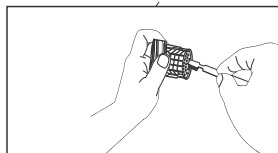
1. Remove the power plug of the washing machine, press the two clasps as shown in the picture, pull out the right clasp first, then pull out the left clasp and take the service board out.



2. After placing the saucer under the filter, open the pump filter by rotating the filter to the left to discharge the residual water.



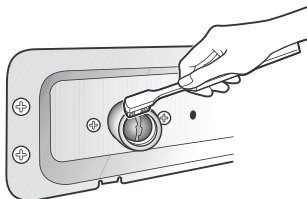
3. Clean the residue and dirt & stains on the pump filter. Confirm if the pump behind the filter is blocked.



4. Re-assemble the filter and the service panel after cleanup. Check for water leaks.

Filter Mesh of Water Inlet Valve

- Periodically remove the water inlet hose, and remove the dirt & stains on the filter mesh.
 - To prevent water splashing, execute the steps described below before removing the water inlet hose.
1. Turn off the water tap.
 2. Press and hold the power button for 3 seconds to turn on the washing machine.
 3. Select the [Cotton] program and then press [Start/Pause] button.
 4. Turn off the washing machine after 1 minute. Water is drained from the inlet hose.
 5. Disconnect the water inlet hose and remove it.
 6. Clean the filter mesh, which is located on the rear of the washing machine. To do this, use a small brush, for example, a toothbrush.
 7. Re-connect the water inlet hose. Turn on the water tap and check for leaks.

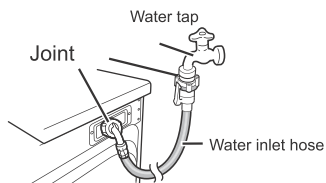


Preventing frozen water inlet, drain hoses and internal connection hoses

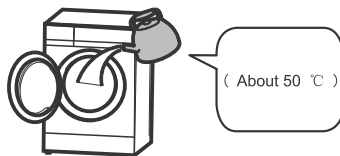
If the washing machine is delivered in freezing weather conditions, after setting up, leave it at room temperature for 24 hours before using. This will ensure that the water inlet/drain hoses and internal connection hoses do not become clogged up with ice.

If your water supply hose freezes, perform the following procedures:

1. Wrap warm towels around the joints of the water inlet hose.



2. Add 2 to 3 liters of warm water to the drum.



3. Run the [Spin] program after few minutes.

Problem		Cause
Body	Buttons do not work.	<ul style="list-style-type: none"> - While washing is in progress, it can only be switched after [Pause/Start] button is pressed. If you want to change the programme, temperature, rinse and other items after the washing machine is started, please turn off machine and turn on the power again.
	Door do not open.	<ul style="list-style-type: none"> - Door lock may be activated. - Child lock may be activated. (See P21). - The water temperature or level may be too high.
	Unusual odour	<ul style="list-style-type: none"> - Rubber parts may give off a smell when you start using the appliance, but the smell will go away over time.
Wash	Water cannot be seen during the wash process.	<ul style="list-style-type: none"> - During wash process, the water amount used by the drum type washing machine is less that used by the pulsator washing machine.
	No water going into the appliance	<ul style="list-style-type: none"> - The water tap might be turned off. - The water inlet hose may be frozen.(See P24). - The water supply may be disrupted. - The filter mesh may be clogged.(See P24).
	Water is going into the appliance, but cannot be stored.	<ul style="list-style-type: none"> - Do not open the door to pour water or hot water into the drum, otherwise water may not be stored, but may be drained out immediately. - If you have paused the washing and then restart it, the appliance may drain out some water. - If drain hose is removed from the fixing screw, water will not accumulate on the drum.
	Water goes into the appliance during the wash process	<ul style="list-style-type: none"> - If the water level is dropped, water is automatically supplied. For heavy loads, the water may fill up repeatedly.
	Drainage during the wash process	<ul style="list-style-type: none"> - After the safe water level for overflow is reached, forced drainage will occur during the wash process.
Rinse	No water flows into the appliance during the rinse process	<ul style="list-style-type: none"> - If water exist in the drum, starts from draining.
Time	The remaining time is changed	<ul style="list-style-type: none"> - The display time is corrected randomly. Therefore, time pause may occur. The displayed time is the standard time and is different from the actual needed time. - If the load is not balanced during the rinse process, operating times will be added, and the rinse time will be extended accordingly.

Problems		Causes
Detergent and Foams	There is less foam	<ul style="list-style-type: none"> - Do not directly put powdered detergent into the drum. → Be sure to put it into a detergent container. - The amount of foam varies, depending on the water temperature, water amount and the quality of water. <ul style="list-style-type: none"> • Low amount of detergent; Type of detergent (low-foam serious stains; detergent etc). • Excessive amount of laundry.
	Excessive foams; Foams may be attached to the internal surface of the cover	The amount of foam varies, depending on the temperature, amount and hardness of the water. You may have used too much detergent. The type of detergent you are using may cause excess foam
	No foam	<ul style="list-style-type: none"> - Do not directly put powdered detergent into the drum. → Be sure to put it into a detergent container. - The amount of foam varies, depending on the temperature, amount and softness of the water. - Detergent may not be in the detergent box.
	Fabric softener overflows.	<ul style="list-style-type: none"> - The softener may have exceeded the MAX level of the detergent container (See P17). - You may have spilt the liquid when closing the detergent container too strongly.
	After the wash has finished, powdered detergent residue remains	<ul style="list-style-type: none"> - Do not directly put powdered detergent into the drum. → Be sure to put it into a detergent container.
Sound	Abnormal sound and excessive vibration	<ul style="list-style-type: none"> - Whether the washing machine is placed on a flat surface. - The anchor bolts may not have been removed. The appliance may be on a sloping or unstable surface. If none of the above is the cause, contact your designated Customer Service Centre. - Whether hairpins or metal pieces are included in the machine.
	There is noise when the water drains out	<ul style="list-style-type: none"> - This is normal; it is noise generated by the operation of the drain pump
Others	The electricity supply cuts out while the appliance is on	<ul style="list-style-type: none"> - The appliance stops operating. When power is restored, it resumes operation from the point that it had stopped
	The water supply is disrupted.	<ul style="list-style-type: none"> - When the water is supplied again, it may be impure at first. You have to disconnect the water supply hose and drain away the impure water through the tap. Make sure that the water supply hose has been reconnected before using the appliance
	The display is not clear	<ul style="list-style-type: none"> - The appliance may be in a brightly lit or sunlit area. This situation is not a failure

Buzzer sounds & Display

<div>E 04</div> <div>Unable to drain</div>	<div>Check for the following problems:</div> <div><ul style="list-style-type: none">- The drain hose is clogged.- The drain hose is immersed in water.- The drain hose is more than 1m high.- The water is frozen.- The drain filter is clogged (see P23).</div> <div><div></div><div>If E04 is still displayed after troubleshooting, it will disappear when you press [Pause/Start]. The program continues running from the time before alarming. Or the washing process can be restarted by turning off and on the washing machine again. Please contact the service center recognized by Sansui after removing the power plug if the faults persist after troubleshooting as described above.</div></div>
<div>E 01</div> <div>Unable to supply water</div>	<div><ul style="list-style-type: none">- The water tap is turned on.- The water tap and inlet hose have been frozen.- Water is cut off.- Stains are present on the inlet filter mesh (see P24).</div> <div><div></div><div>If E01 is still displayed after troubleshooting, it will disappear when you press [Pause/Start]. If the program continues running from the time before alarming or shutdown, reselect the program sequence from the beginning. Please contact the service center recognized by Sansui after removing the power plug if the faults persist after troubleshooting as described above.</div></div>
<div>E 05</div> <div>The door is not closed</div>	<div><ul style="list-style-type: none">- Whether the door is opened → Please close the door.</div> <div><div></div><div>Check that the door is closed. E05 will disappear when you press [Pause/Start]. If the program continues running from the time before alarming or shutdown, reselect the program sequence from the beginning. Please contact the service center recognized by Sansui after removing the power plug if the faults persist after troubleshooting as described above.</div></div>

Specifications

	JSX60FFL-2022S/C	JSX70FFL-2022S/C
Rated voltage	220-240 V	220-240 V
Rated frequency	50 Hz	50 Hz
Rated power consumption	1900 W	1900 W
Outside dimensions	595X430X845 (mm)	595X470X845 (mm)
Net weight	58 kg	60 kg
Dewatering	1200rpm	1200rpm
Water consumption (L/work cycle)	40	45
Tap water pressure	0.03-1.0 MPa	0.03-1.0 MPa
Washing noise	< 62 dB (A-weight)	62 dB (A-weight)
Spin noise	< 76 dB (A-weight)	<76 dB (A-weight)

REACH US AT

Jaina India Pvt Limited, D-170, Okhla Industrial Area, Phase-I, New Delhi-110020
Customer Care: 1860 500 3555 | Website: www.sansuiworld.com